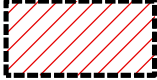




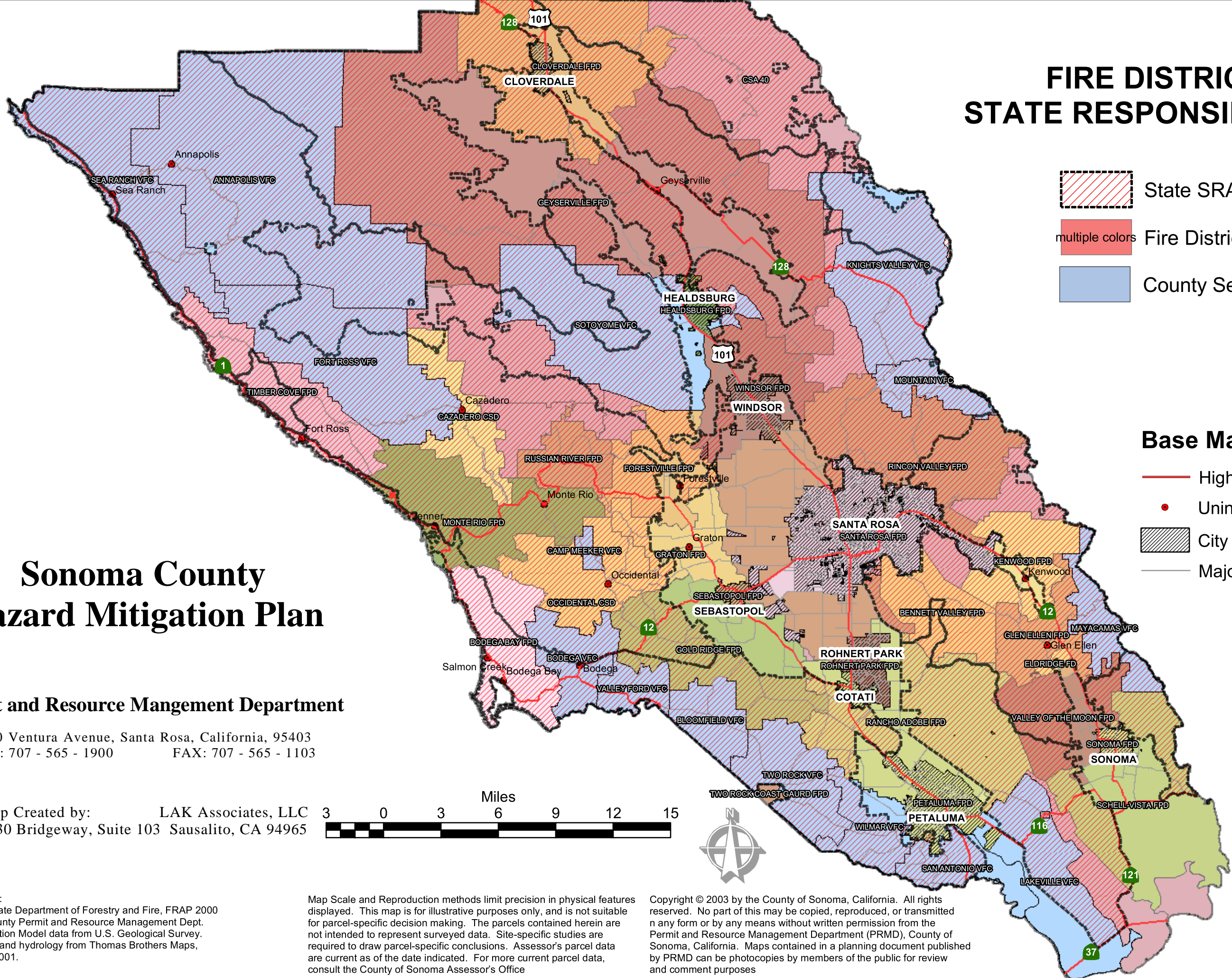


FIRE DISTRICTS AND STATE RESPONSIBILITY AREAS

-  State SRA
-  Fire Districts
-  County Service Area 40 Districts

Base Map Data

-  Highways
-  Unincorporated Communities
-  City Boundaries
-  Major Roads

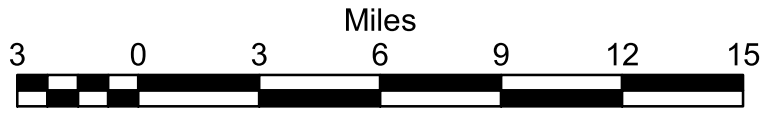


Sonoma County Hazard Mitigation Plan

Permit and Resource Mangement Department

2550 Ventura Avenue, Santa Rosa, California, 95403
 TEL: 707 - 565 - 1900 FAX: 707 - 565 - 1103

Map Created by: LAK Associates, LLC
 3030 Bridgeway, Suite 103 Sausalito, CA 94965



Data Source:
 California State Department of Forestry and Fire, FRAP 2000
 Sonoma County Permit and Resource Management Dept.
 Digital Elevation Model data from U.S. Geological Survey.
 Major roads and hydrology from Thomas Brothers Maps,
 Inc., 2000, 2001.

Map Scale and Reproduction methods limit precision in physical features displayed. This map is for illustrative purposes only, and is not suitable for parcel-specific decision making. The parcels contained herein are not intended to represent surveyed data. Site-specific studies are required to draw parcel-specific conclusions. Assessor's parcel data are current as of the date indicated. For more current parcel data, consult the County of Sonoma Assessor's Office

Copyright © 2003 by the County of Sonoma, California. All rights reserved. No part of this may be copied, reproduced, or transmitted in any form or by any means without written permission from the Permit and Resource Management Department (PRMD), County of Sonoma, California. Maps contained in a planning document published by PRMD can be photocopies by members of the public for review and comment purposes

FIGURE 2-11